



## RA 210/V2/ER--X-NPP

Insert bearings, eccentric sleeve locked outer spherical bearings, three-layer sealed outer spherical bearings

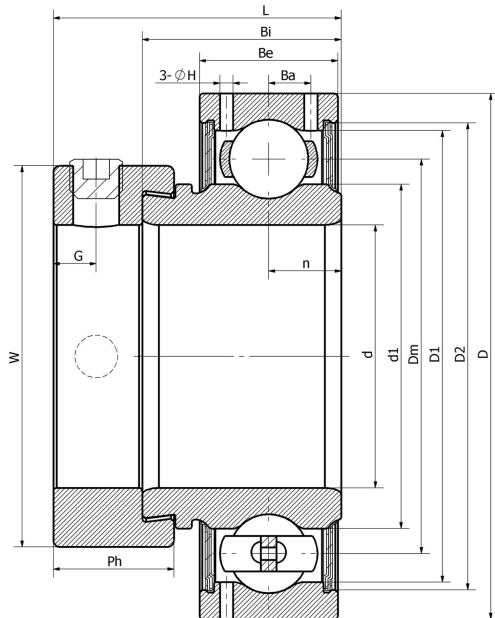
CSA210

UY210.SH

RAE210-XL-NPP

FHR210

## 技术信息



### 主要尺寸和性能参数

d	50mm	Inside diameter
D	90mm	Outside diameter
d1	登录可见尺寸, 去登录	Outer diameter innering
Dm	70mm	Center diameter
D1	登录可见尺寸, 去登录	Outer ring inner diameter
D2	登录可见尺寸, 去登录	Seal groove diameter
W	69.9mm	Eccentric sleeve outer diameter
Be	22mm	Outer ring height
n	11mm	channel distance
Bi	30.2mm	Inner ring height
L	43.5mm	total height
G	6.5mm	Set screw hole distance
Ph	18.3mm	Eccentric sleeve height
(UNF)	M8*1	Set screw specifications
Cr	35300N	Radial static load rating
Cor	23200N	Radial dynamic load rating
≈m	0.6Kg	weight

\*数据表仅为所选产品的尺寸和基本额定载荷概览。请始终遵守本产品的所有更多信息和指南。您可通过我们网站上的联系表了解更多信息。