



RA 202-10/V2/ER--X-NPP

Insert bearings, eccentric sleeve locked outer spherical bearings, three-layer sealed outer spherical bearings

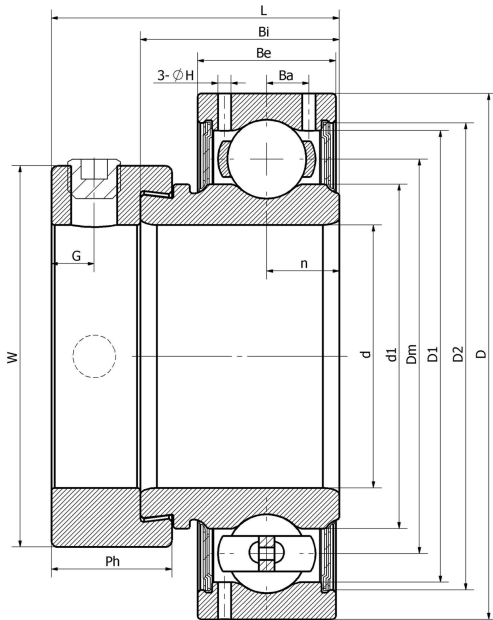
CSA202-10

UY202-10.SH

RAE22-XL-NPP

FHR202-10

技术信息



主要尺寸和性能参数

| | | |
|-------|-------------|---------------------------------|
| d | 15.875mm | Inside diameter |
| D | 40mm | Outside diameter |
| d1 | 登录可见尺寸, 去登录 | Outer diameter innering |
| Dm | 29mm | Center diameter |
| D1 | 登录可见尺寸, 去登录 | Outer ring inner diameter |
| D2 | 登录可见尺寸, 去登录 | Seal groove diameter |
| W | 28.6mm | Eccentric sleeve outer diameter |
| Be | 12mm | Outer ring height |
| n | 6.5mm | channel distance |
| Bi | 19.1mm | Inner ring height |
| L | 28.4mm | total height |
| G | 5mm | Set screw hole distance |
| Ph | 13.5mm | Eccentric sleeve height |
| (UNF) | 1/4-28 | Set screw specifications |
| Cr | 9500N | Radial static load rating |
| Cor | 4800N | Radial dynamic load rating |
| ≈m | 0.15Kg | weight |

*数据表仅为所选产品的尺寸和基本额定载荷概览。请始终遵守本产品的所有更多信息和指南。您可通过我们网站上的联系表了解更多信息。