

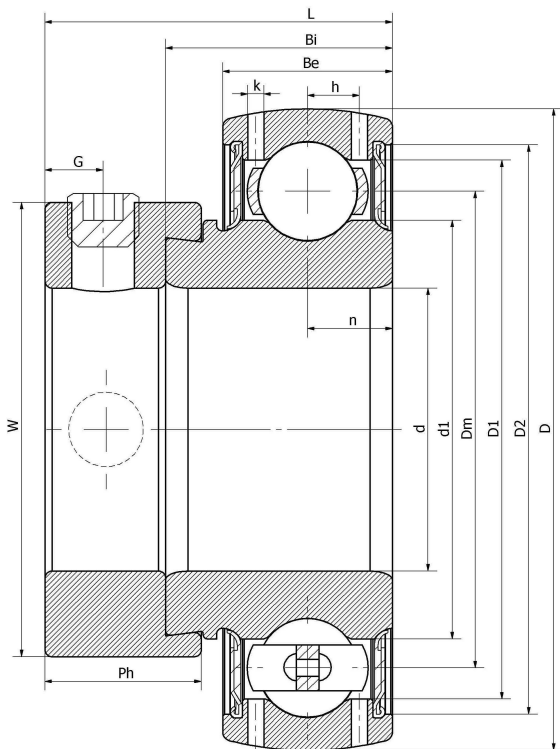


SA202-10/V4/ER--X-NPP

Insert spherical bearings, eccentric sleeve locked outer spherical bearings, three-layer sealed outer spherical bearings

GRA010-NPP-B-AS2/V	KH 202 - 10 AE	GRA 010 RRB
SA 202 - 10	KH 202 - 10 AE	EN 202 - 10 S
AEL 202 - 010 W 3	1217 - 5/8 ECG	YET 203 - 010
ES202-10G2		

技术信息



主要尺寸和性能参数

d	15.875mm	Inside diameter
D	40mm	Outside diameter
d1	登录可见尺寸, 去登录	Outer diameter innering
Dm	29mm	Center diameter
D1	登录可见尺寸, 去登录	Outer ring inner diameter
D2	登录可见尺寸, 去登录	Seal groove diameter
W	28.6mm	Eccentric sleeve outer diameter
Be	12mm	Outer ring height
h	3.6mm	Oil hole distance
k	1.2mm	Oil hole diameter
n	6.5mm	channel distance
Bi	19.1mm	Inner ring height
L	28.4mm	total height
G	5mm	Set screw hole distance
Ph	13.5mm	Eccentric sleeve height
(UNF)	1/4-28	Set screw specifications
Cr	9510N	Radial static load rating
Cor	4805N	Radial dynamic load rating
≈m	0.14KG	weight

联系方式: 邮箱: mr.suo@zrbearing.net

电话: 0319-8509111

地址: 河北省临西县城北环路北侧-中达轴承