

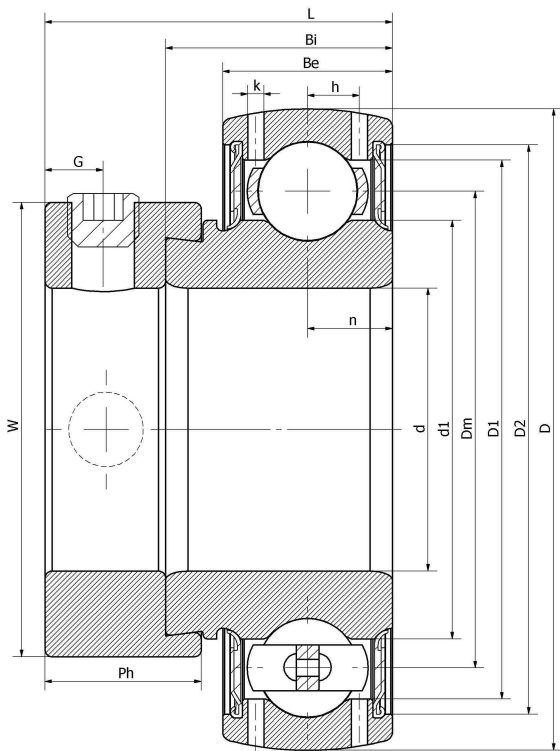


### SA 205-16/V4/ER--X-NPP

Insert spherical bearings, eccentric sleeve locked outer spherical bearings, three-layer sealed outer spherical bearings

GRA100-NPP-B-AS2/V	GRA 100 RRB	KH 205 - 16 AE
SA 205 - 16	EN 205 - 16 S	AEL 205 - 100 W 3
1225 - 1 ECG	YET 205 - 100	FH205 -16G
ES205-16G2		

## 技术信息



### 主要尺寸和性能参数

d	25.4mm	Inside diameter
D	52mm	Outside diameter
d1	登录可见尺寸, 去登录	Outer diameter innering
Dm	39mm	Center diameter
D1	登录可见尺寸, 去登录	Outer ring inner diameter
D2	登录可见尺寸, 去登录	Seal groove diameter
W	38.1mm	Eccentric sleeve outer diameter
Be	15mm	Outer ring height
h	4.4mm	Oil hole distance
k	1.5mm	Oil hole diameter
n	7.5mm	channel distance
Bi	21.4mm	Inner ring height
L	30.7mm	total height
G	5mm	Set screw hole distance
Ph	13.5mm	Eccentric sleeve height
(UNF)	1/4-28	Set screw specifications
Cr	14020N	Radial static load rating
Cor	7840N	Radial dynamic load rating
≈m	0.19KG	weight

联系方式: 邮箱: [mr.suo@zrbearing.net](mailto:mr.suo@zrbearing.net)

电话: 0319-5628888

地址: 河北省临西县城北环路北侧-中达轴承