



SA 207-21/V4/ER--X-NPP

Insert spherical bearings, eccentric sleeve locked outer spherical bearings, three-layer sealed outer spherical bearings

GRA 105 NPPB

KH 207 - 21 AE

GRA 105 RRB

EN 207 - 21 S

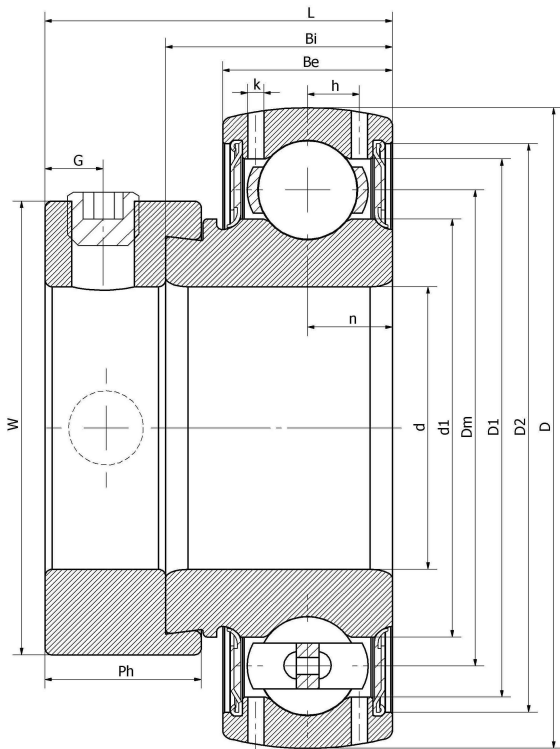
AEL 207 - 105 W 3

YET 207 - 105

ES 207 - 21 G2

FH207 -21G

技术信息



主要尺寸和性能参数

| | | |
|-------|-------------|---------------------------------|
| d | 33.3375mm | Inside diameter |
| D | 72mm | Outside diameter |
| d1 | 登录可见尺寸, 去登录 | Outer diameter innering |
| Dm | 53.5mm | Center diameter |
| D1 | 登录可见尺寸, 去登录 | Outer ring inner diameter |
| D2 | 登录可见尺寸, 去登录 | Seal groove diameter |
| W | 55.6mm | Eccentric sleeve outer diameter |
| Be | 17mm | Outer ring height |
| h | 5.8mm | Oil hole distance |
| k | 1.8mm | Oil hole diameter |
| n | 9.5mm | channel distance |
| Bi | 25.4mm | Inner ring height |
| L | 38.7mm | total height |
| G | 6.5mm | Set screw hole distance |
| Ph | 17.5mm | Eccentric sleeve height |
| (UNF) | 5/16-24 | Set screw specifications |
| Cr | 25890N | Radial static load rating |
| Cor | 15200N | Radial dynamic load rating |
| ≈m | 0.51KG | weight |

联系方式: 邮箱: mr.suo@zrbearing.net

电话: 0319-8509111

地址: 河北省临西县城北环路北侧-中达轴承