



### SA 209-28/V4/ER--X-NPP

Insert spherical bearings, eccentric sleeve locked outer spherical bearings, three-layer sealed outer spherical bearings

GRA 112 NPPB-AS2/V-

FA106

KH 209 - 28 BE

GRA 112 RRB

UY 209 - 28 2S

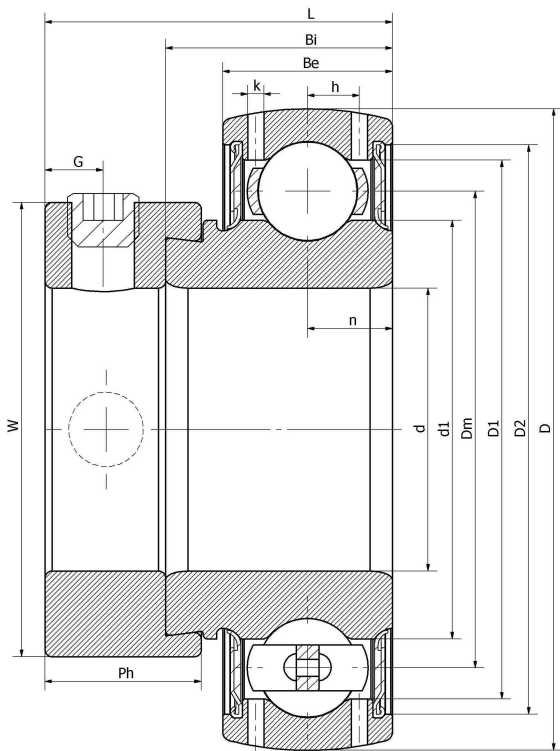
EN 209 - 28 S

1245 - 1 3/4 ECG

YET 209 - 112

FH209 -28G

## 技术信息



### 主要尺寸和性能参数

|       |             |                                 |
|-------|-------------|---------------------------------|
| d     | 44.45mm     | Inside diameter                 |
| D     | 85mm        | Outside diameter                |
| d1    | 登录可见尺寸, 去登录 | Outer diameter innering         |
| Dm    | 66mm        | Center diameter                 |
| D1    | 登录可见尺寸, 去登录 | Outer ring inner diameter       |
| D2    | 登录可见尺寸, 去登录 | Seal groove diameter            |
| W     | 63.5mm      | Eccentric sleeve outer diameter |
| Be    | 19mm        | Outer ring height               |
| h     | 6.5mm       | Oil hole distance               |
| k     | 1.9mm       | Oil hole diameter               |
| n     | 11mm        | channel distance                |
| Bi    | 30.2mm      | Inner ring height               |
| L     | 43.5mm      | total height                    |
| G     | 6.5mm       | Set screw hole distance         |
| Ph    | 18.3mm      | Eccentric sleeve height         |
| (UNF) | 5/16-24     | Set screw specifications        |
| Cr    | 32850N      | Radial static load rating       |
| Cor   | 20790N      | Radial dynamic load rating      |
| ≈m    | 0.73KG      | weight                          |

联系方式: 邮箱: [mr.suo@zrbearing.net](mailto:mr.suo@zrbearing.net)

电话: 0319-8509111

地址: 河北省临西县城北环路北侧-中达轴承