

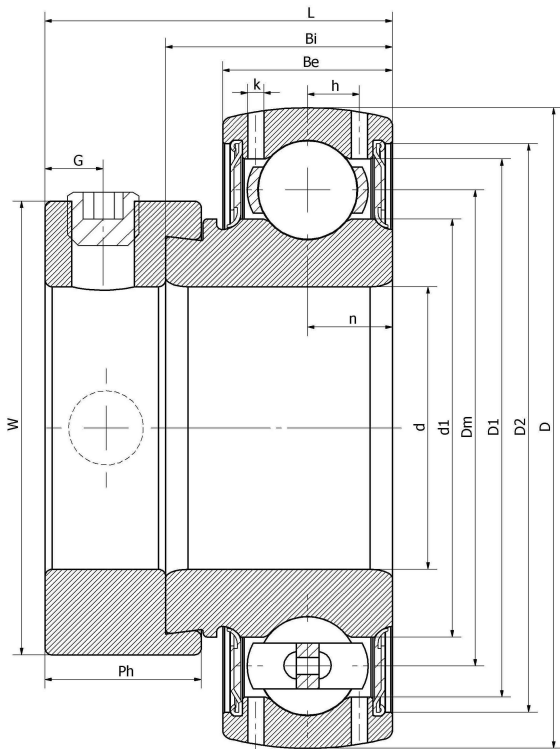


### SA 211/V4/ER--X-NPP

Insert spherical bearings, eccentric sleeve locked outer spherical bearings, three-layer sealed outer spherical bearings

GRAE55-XL-NPP-B	KH 211 BE	GRAE 55 RRB
KH 211 BE	EN 211	YET 211
UY 211 2S	AEL211	FH211-55G

### 技术信息



#### 主要尺寸和性能参数

d	55mm	Inside diameter
D	100mm	Outside diameter
d1	登录可见尺寸, 去登录	Outer diameter innering
Dm	77.5mm	Center diameter
D1	登录可见尺寸, 去登录	Outer ring inner diameter
D2	登录可见尺寸, 去登录	Seal groove diameter
W	76.2mm	Eccentric sleeve outer diameter
Be	24mm	Outer ring height
h	7.2mm	Oil hole distance
k	1.8mm	Oil hole diameter
n	12mm	channel distance
Bi	32.5mm	Inner ring height
L	48.7mm	total height
G	8mm	Set screw hole distance
Ph	20.7mm	Eccentric sleeve height
(UNF)	M10*1.25	Set screw specifications
Cr	43150N	Radial static load rating
Cor	29220N	Radial dynamic load rating
≈m	1.07KG	weight

联系方式: 邮箱: [mr.suo@zrbearing.net](mailto:mr.suo@zrbearing.net)

电话: 0319-8509111

地址: 河北省临西县城北环路北侧-中达轴承