



NA 205-14/V3/ER--RB3

Insert spherical bearings, eccentric sleeve locked outer spherical bearings, three-layer sealed outer spherical bearings

G1014 KRRB3

UEL205-14 L3

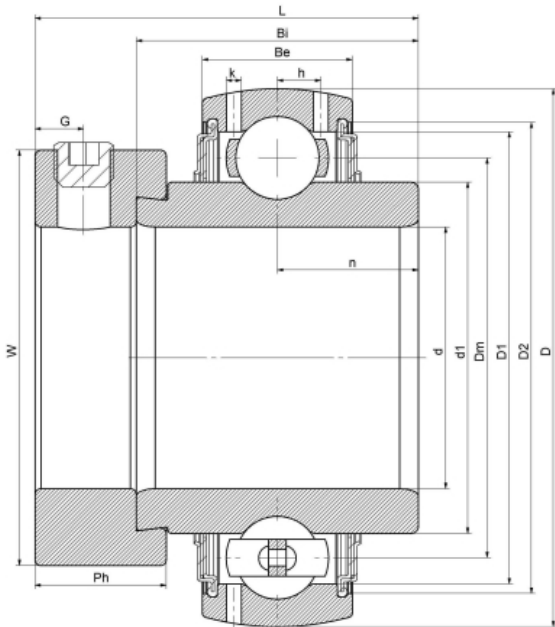
HC205-14 L3

YEL205-014

G205-14 R3

EX205-14 L3

技术信息



主要尺寸和性能参数

| | | |
|-------|-------------|---------------------------------|
| d | 22.225mm | Inside diameter |
| D | 52mm | Outside diameter |
| d1 | 登录可见尺寸, 去登录 | Outer diameter innering |
| d1 | 39mm | Center diameter |
| D1 | 登录可见尺寸, 去登录 | Outer ring inner diameter |
| D2 | 登录可见尺寸, 去登录 | Seal groove diameter |
| W | 38.1mm | Eccentric sleeve outer diameter |
| Be | 17mm | Outer ring height |
| h | 4.4mm | Oil hole distance |
| n | 17.4mm | channel distance |
| Bi | 34.8mm | Inner ring height |
| L | 44.1mm | total height |
| G | 5mm | Set screw hole distance |
| Ph | 13.5mm | Eccentric sleeve height |
| (UNF) | 1/4-28 | Set screw specifications |
| Cr | 14000N | Radial static load rating |
| Cor | 7800N | Radial dynamic load rating |
| ≈m | 0.3Kg | weight |

联系方式: 邮箱: mr.suo@zrbearing.net

电话: 0319-5628888

地址: 河北省临西县城北环路北侧-中达轴承