



NA 205-15/V3/ER--RB3

Insert spherical bearings, eccentric sleeve locked outer spherical bearings, three-layer sealed outer spherical bearings

G1015 KRRB3

UEL205-15 L3

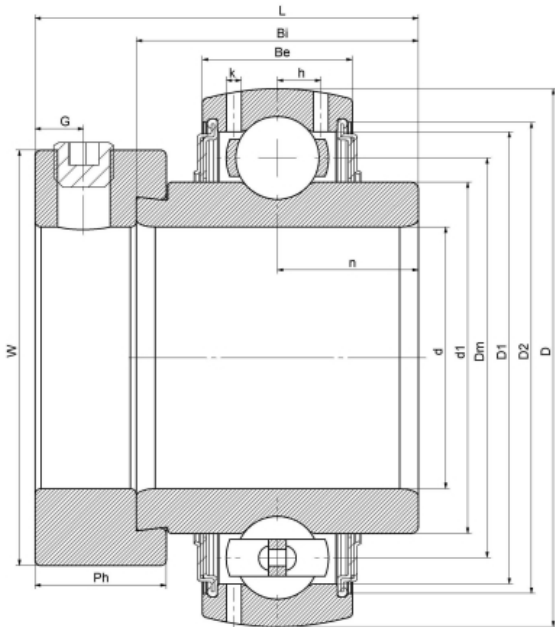
HC205-15 L3

YEL205-015

G205-15 R3

EX205-15 L3

技术信息



主要尺寸和性能参数

d	23.813mm	Inside diameter
D	52mm	Outside diameter
d1	登录可见尺寸, 去登录	Outer diameter innering
d1	39mm	Center diameter
D1	登录可见尺寸, 去登录	Outer ring inner diameter
D2	登录可见尺寸, 去登录	Seal groove diameter
W	38.1mm	Eccentric sleeve outer diameter
Be	17mm	Outer ring height
h	4.4mm	Oil hole distance
n	17.4mm	channel distance
Bi	34.8mm	Inner ring height
L	44.1mm	total height
G	5mm	Set screw hole distance
Ph	13.5mm	Eccentric sleeve height
(UNF)	1/4-28	Set screw specifications
Cr	14000N	Radial static load rating
Cor	7800N	Radial dynamic load rating
≈m	0.3Kg	weight

联系方式: 邮箱: mr.suo@zrbearing.net

电话: 0319-8509111

地址: 河北省临西县城北环路北侧-中达轴承