



NA 206-18/V3/ER--RB3

Insert spherical bearings, eccentric sleeve locked outer spherical bearings, three-layer sealed outer spherical bearings

G1102 KRRB3

UEL206-18 L3

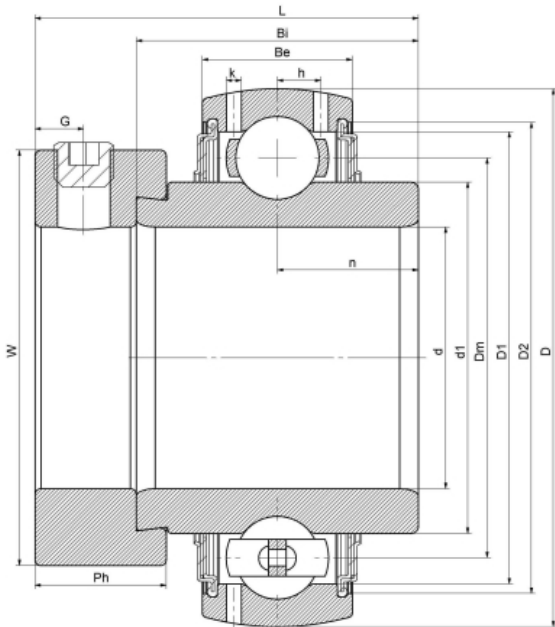
HC206-18 L3

YEL206-102

G206-18 R3

EX206-18 L3

技术信息



主要尺寸和性能参数

d	28.575mm	Inside diameter
D	62mm	Outside diameter
d1	登录可见尺寸, 去登录	Outer diameter innering
d1	46mm	Center diameter
D1	登录可见尺寸, 去登录	Outer ring inner diameter
D2	登录可见尺寸, 去登录	Seal groove diameter
W	44.5mm	Eccentric sleeve outer diameter
Be	19mm	Outer ring height
h	5mm	Oil hole distance
n	18.2mm	channel distance
Bi	36.4mm	Inner ring height
L	48.1mm	total height
G	6mm	Set screw hole distance
Ph	15.9mm	Eccentric sleeve height
(UNF)	5/16-24	Set screw specifications
Cr	19600N	Radial static load rating
Cor	11200N	Radial dynamic load rating
≈m	0.4Kg	weight

联系方式: 邮箱: mr.suo@zrbearing.net

电话: 0319-5628888

地址: 河北省临西县城北环路北侧-中达轴承