



NA207-23/V3/ER--RB3

Insert spherical bearings, eccentric sleeve locked outer spherical bearings, three-layer sealed outer spherical bearings

G1107 KRRB3

UEL207-23 L3

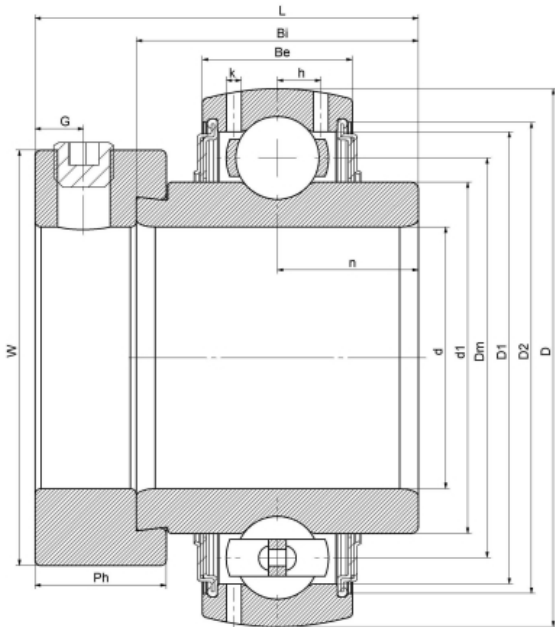
HC207-23 L3

YEL207-107

G207-23 R3

EX207-23 L3

技术信息



主要尺寸和性能参数

d	36.513mm	Inside diameter
D	72mm	Outside diameter
d1	登录可见尺寸, 去登录	Outer diameter innering
d1	53.5mm	Center diameter
D1	登录可见尺寸, 去登录	Outer ring inner diameter
D2	登录可见尺寸, 去登录	Seal groove diameter
W	55.6mm	Eccentric sleeve outer diameter
Be	19mm	Outer ring height
h	5.8mm	Oil hole distance
n	18.8mm	channel distance
Bi	37.6mm	Inner ring height
L	50.9mm	total height
G	6.5mm	Set screw hole distance
Ph	17.5mm	Eccentric sleeve height
(UNF)	5/16-24	Set screw specifications
Cr	25700N	Radial static load rating
Cor	15200N	Radial dynamic load rating
≈m	0.6Kg	weight

联系方式: 邮箱: mr.suo@zrbearing.net

电话: 0319-8509111

地址: 河北省临西县城北环路北侧-中达轴承