



NA209-26/V3/ER--RB3

Insert spherical bearings, eccentric sleeve locked outer spherical bearings, three-layer sealed outer spherical bearings

G1110 KRRB3

UEL209-26 L3

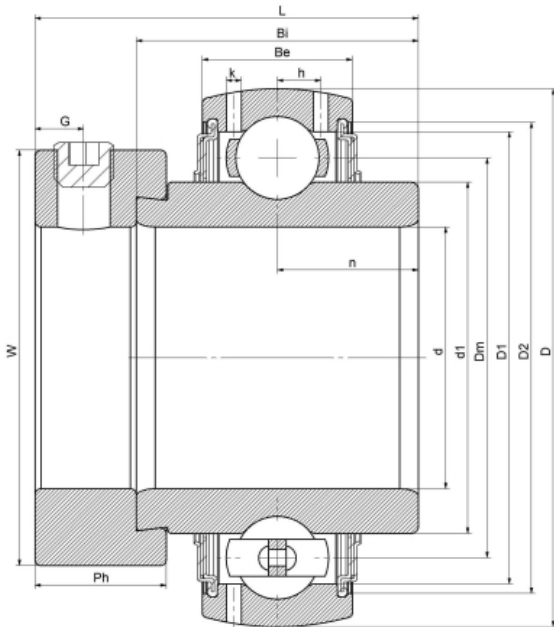
HC209-26 L3

YEL209-110

G209-26 R3

EX209-26 L3

技术信息



主要尺寸和性能参数

d	41.275mm	Inside diameter
D	85mm	Outside diameter
d1	登录可见尺寸, 去登录	Outer diameter innering
d1	66mm	Center diameter
D1	登录可见尺寸, 去登录	Outer ring inner diameter
D2	登录可见尺寸, 去登录	Seal groove diameter
W	63.5mm	Eccentric sleeve outer diameter
Be	22mm	Outer ring height
h	6.5mm	Oil hole distance
n	21.4mm	channel distance
Bi	42.8mm	Inner ring height
L	56.1mm	total height
G	6.5mm	Set screw hole distance
Ph	18.3mm	Eccentric sleeve height
(UNF)	5/16-24	Set screw specifications
Cr	32800N	Radial static load rating
Cor	20800N	Radial dynamic load rating
≈m	0.9Kg	weight

联系方式: 邮箱: mr.suo@zrbearing.net

电话: 0319-8509111

地址: 河北省临西县城北环路北侧-中达轴承