



NA211/V3/ER--RB3

Insert spherical bearings, eccentric sleeve locked outer spherical bearings, three-layer sealed outer spherical bearings

GE55 KRRB3

UEL211 L3

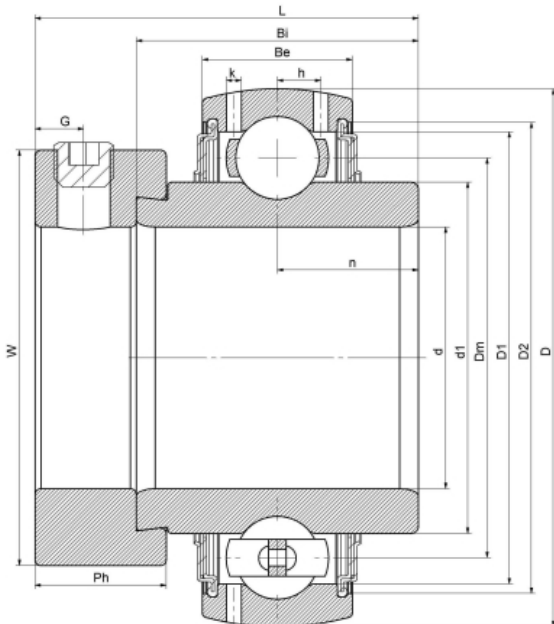
HC211 L3

YEL211

G211 R3

EX211 L3

技术信息



主要尺寸和性能参数

d	55mm	Inside diameter
D	100mm	Outside diameter
d1	登录可见尺寸, 去登录	Outer diameter innering
d1	77.5mm	Center diameter
D1	登录可见尺寸, 去登录	Outer ring inner diameter
D2	登录可见尺寸, 去登录	Seal groove diameter
W	76.2mm	Eccentric sleeve outer diameter
Be	25mm	Outer ring height
h	7.2mm	Oil hole distance
n	27.7mm	channel distance
Bi	55.4mm	Inner ring height
L	71.1mm	total height
G	8mm	Set screw hole distance
Ph	20.7mm	Eccentric sleeve height
(UNF)	M10*1.25	Set screw specifications
Cr	43100N	Radial static load rating
Cor	29200N	Radial dynamic load rating
≈m	1.45Kg	weight

联系方式: 邮箱: mr.suo@zrbearing.net

电话: 0319-8509111

地址: 河北省临西县城北环路北侧-中达轴承