



NA212-38/V3/ER--RB3

Insert spherical bearings, eccentric sleeve locked outer spherical bearings, three-layer sealed outer spherical bearings

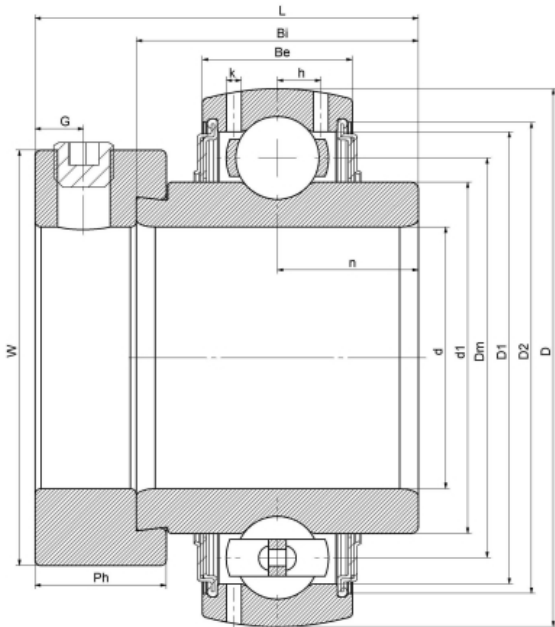
UEL212-38 L3

HC212-38 L3

G212-38 R3

EX212-38 L3

技术信息



主要尺寸和性能参数

| | | |
|-------|-------------|---------------------------------|
| d | 60.325mm | Inside diameter |
| D | 110mm | Outside diameter |
| d1 | 登录可见尺寸, 去登录 | Outer diameter innering |
| d1 | 85mm | Center diameter |
| D1 | 登录可见尺寸, 去登录 | Outer ring inner diameter |
| D2 | 登录可见尺寸, 去登录 | Seal groove diameter |
| W | 84.2mm | Eccentric sleeve outer diameter |
| Be | 27mm | Outer ring height |
| h | 8.2mm | Oil hole distance |
| n | 30.9mm | channel distance |
| Bi | 61.8mm | Inner ring height |
| L | 77.5mm | total height |
| G | 8mm | Set screw hole distance |
| Ph | 22.3mm | Eccentric sleeve height |
| (UNF) | 3/8-24 | Set screw specifications |
| Cr | 52500N | Radial static load rating |
| Cor | 32900N | Radial dynamic load rating |
| ≈m | 1.9Kg | weight |

联系方式: 邮箱: mr.suo@zrbearing.net

电话: 0319-8509111

地址: 河北省临西县城北环路北侧-中达轴承