

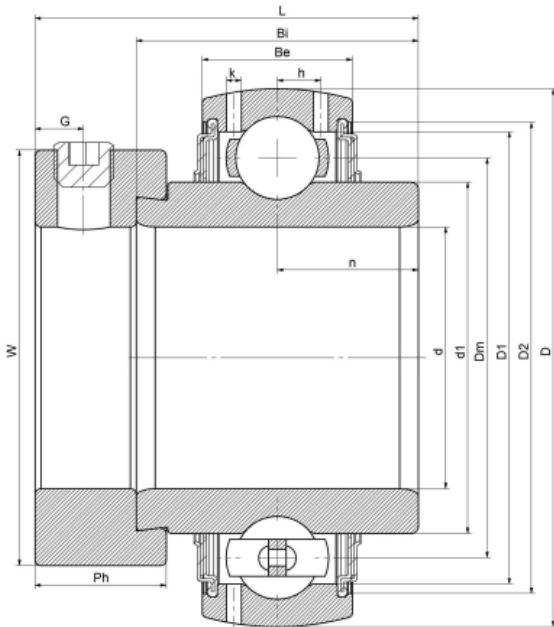


### NA213-600/V3/ER--RB3

Insert spherical bearings, eccentric sleeve locked outer spherical bearings, three-layer sealed outer spherical bearings

G213-600 R3

## 技术信息



### 主要尺寸和性能参数

d	60mm	Inside diameter
D	120mm	Outside diameter
d1	登录可见尺寸, 去登录	Outer diameter innering
d1	92.5mm	Center diameter
D1	登录可见尺寸, 去登录	Outer ring inner diameter
D2	登录可见尺寸, 去登录	Seal groove diameter
W	97mm	Eccentric sleeve outer diameter
Be	28mm	Outer ring height
h	8.7mm	Oil hole distance
n	34.1mm	channel distance
Bi	68.2mm	Inner ring height
L	85.5mm	total height
G	8.5mm	Set screw hole distance
Ph	23.9mm	Eccentric sleeve height
(UNF)	3/8-24	Set screw specifications
Cr	57400N	Radial static load rating
Cor	40000N	Radial dynamic load rating
≈m	2.4Kg	weight

联系方式: 邮箱: [mr.suo@zrbearing.net](mailto:mr.suo@zrbearing.net)

电话: 0319-8509111

地址: 河北省临西县城北环路北侧-中达轴承