



NA215-47/V3/ER--RB3

Insert spherical bearings, eccentric sleeve locked outer spherical bearings, three-layer sealed outer spherical bearings

G1215 KRRB3

UEL215-47 L3

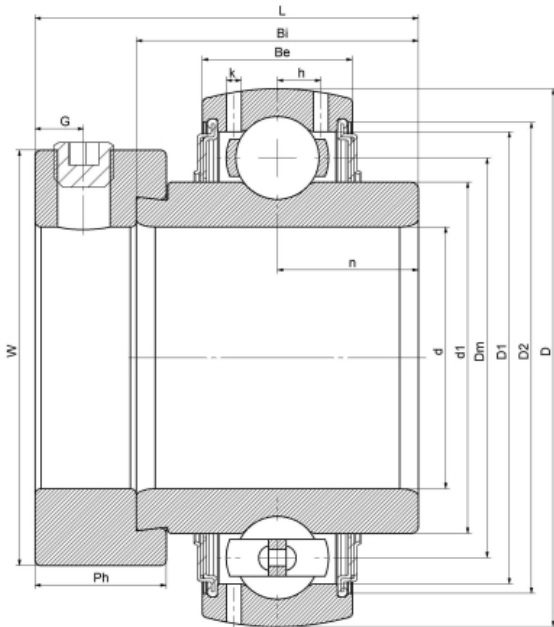
HC215-47 L3

YEL215-215

G215-47 R3

EX215-47 L3

技术信息



主要尺寸和性能参数

d	74.6125mm	Inside diameter
D	130mm	Outside diameter
d1	登录可见尺寸, 去登录	Outer diameter innering
d1	102.5mm	Center diameter
D1	登录可见尺寸, 去登录	Outer ring inner diameter
D2	登录可见尺寸, 去登录	Seal groove diameter
W	102mm	Eccentric sleeve outer diameter
Be	30mm	Outer ring height
h	8.5mm	Oil hole distance
n	37.3mm	channel distance
Bi	74.6mm	Inner ring height
L	91.9mm	total height
G	8.5mm	Set screw hole distance
Ph	23.9mm	Eccentric sleeve height
(UNF)	3/8-24	Set screw specifications
Cr	66200N	Radial static load rating
Cor	49500N	Radial dynamic load rating
≈m	2.8Kg	weight

联系方式: 邮箱: mr.suo@zrbearing.net

电话: 0319-8509111

地址: 河北省临西县城北环路北侧-中达轴承