

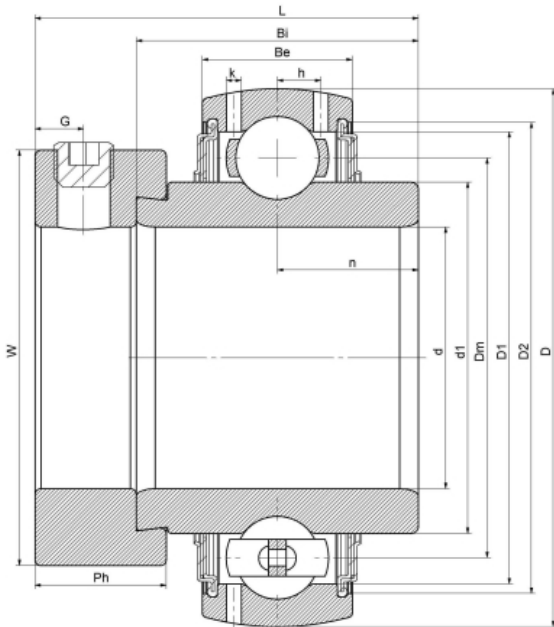


NA216-750/V3/ER--RB3

Insert spherical bearings, eccentric sleeve locked outer spherical bearings, three-layer sealed outer spherical bearings

G216-750 R3

技术信息



主要尺寸和性能参数

d	75mm	Inside diameter
D	140mm	Outside diameter
d1	登录可见尺寸, 去登录	Outer diameter innering
d1	110mm	Center diameter
D1	登录可见尺寸, 去登录	Outer ring inner diameter
D2	登录可见尺寸, 去登录	Seal groove diameter
W	111mm	Eccentric sleeve outer diameter
Be	33mm	Outer ring height
h	10.3mm	Oil hole distance
n	37.3mm	channel distance
Bi	74.6mm	Inner ring height
L	95mm	total height
G	10.3mm	Set screw hole distance
Ph	27mm	Eccentric sleeve height
(UNF)	7/16-20	Set screw specifications
Cr	72600N	Radial static load rating
Cor	54200N	Radial dynamic load rating
≈m	3.4Kg	weight

联系方式: 邮箱: mr.suo@zrbearing.net

电话: 0319-8509111

地址: 河北省临西县城北环路北侧-中达轴承