



NA218/V3/ER--RB3

Insert spherical bearings, eccentric sleeve locked outer spherical bearings, three-layer sealed outer spherical bearings

GE90 KRRB3

UEL218 L3

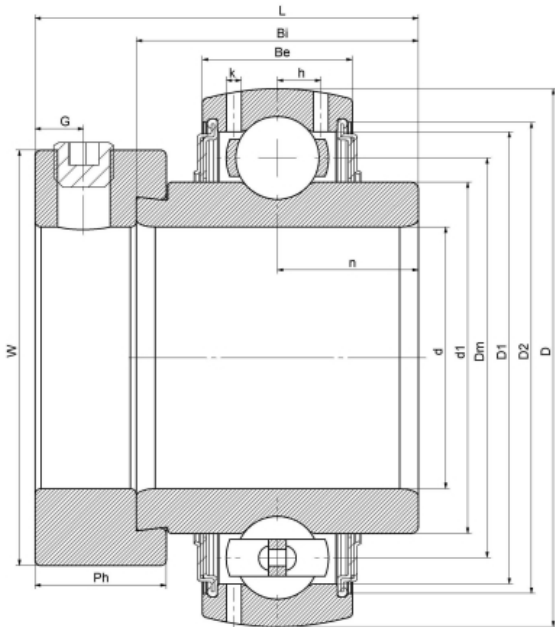
HC218 L3

YEL218

G218 R3

EX218 L3

技术信息



主要尺寸和性能参数

d	90mm	Inside diameter
D	160mm	Outside diameter
d1	登录可见尺寸, 去登录	Outer diameter innering
d1	125mm	Center diameter
D1	登录可见尺寸, 去登录	Outer ring inner diameter
D2	登录可见尺寸, 去登录	Seal groove diameter
W	119mm	Eccentric sleeve outer diameter
Be	32mm	Outer ring height
h	11.2mm	Oil hole distance
n	23mm	channel distance
Bi	52mm	Inner ring height
L	70.8mm	total height
G	9.5mm	Set screw hole distance
Ph	25.4mm	Eccentric sleeve height
(UNF)	M12*1.25	Set screw specifications
Cr	74500N	Radial static load rating
Cor	71600N	Radial dynamic load rating
≈m	3.7Kg	weight

联系方式: 邮箱: mr.suo@zrbearing.net

电话: 0319-8509111

地址: 河北省临西县城北环路北侧-中达轴承