



NA220/V3/ER--RB3

Insert spherical bearings, eccentric sleeve locked outer spherical bearings, three-layer sealed outer spherical bearings

GE100 KRRB3

UEL220 L3

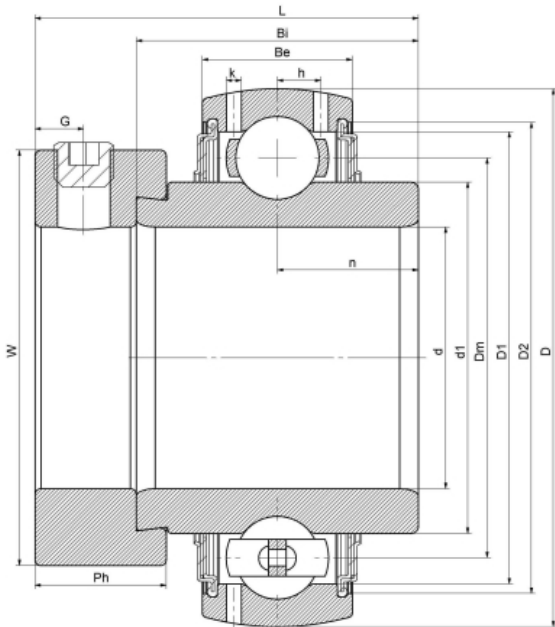
HC220 L3

YEL220

G220 R3

EX220 L3

技术信息



主要尺寸和性能参数

d	100mm	Inside diameter
D	180mm	Outside diameter
d1	登录可见尺寸, 去登录	Outer diameter innering
d1	140mm	Center diameter
D1	登录可见尺寸, 去登录	Outer ring inner diameter
D2	登录可见尺寸, 去登录	Seal groove diameter
W	139.7mm	Eccentric sleeve outer diameter
Be	36mm	Outer ring height
h	12.1mm	Oil hole distance
n	25.5mm	channel distance
Bi	57.5mm	Inner ring height
L	82.7mm	total height
G	13mm	Set screw hole distance
Ph	31.8mm	Eccentric sleeve height
(UNF)	M16*1.5	Set screw specifications
Cr	107900N	Radial static load rating
Cor	78400N	Radial dynamic load rating
≈m	5.3Kg	weight

联系方式: 邮箱: mr.suo@zrbearing.net

电话: 0319-5628888

地址: 河北省临西县城北环路北侧-中达轴承