



NA305-14/V3/ER--RB3

Insert spherical bearings, eccentric sleeve locked outer spherical bearings, three-layer sealed outer spherical bearings

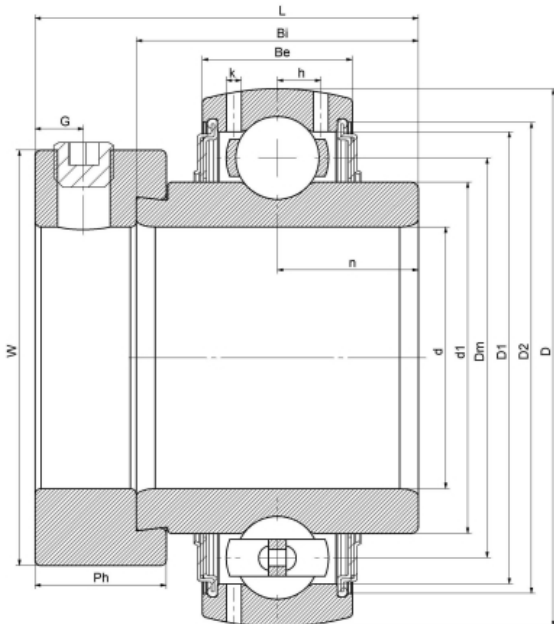
UEL305-14 L3

HC305-14 L3

G305-14 R3

EX305-14 L3

技术信息



主要尺寸和性能参数

d	22.23mm	Inside diameter
D	62mm	Outside diameter
d1	登录可见尺寸, 去登录	Outer diameter innering
d1	43.5mm	Center diameter
D1	登录可见尺寸, 去登录	Outer ring inner diameter
D2	登录可见尺寸, 去登录	Seal groove diameter
W	42.8mm	Eccentric sleeve outer diameter
Be	21mm	Outer ring height
h	5.8mm	Oil hole distance
n	16.7mm	channel distance
Bi	34.9mm	Inner ring height
L	46.6mm	total height
G	6mm	Set screw hole distance
Ph	15.9mm	Eccentric sleeve height
(UNF)	5/16-24	Set screw specifications
Cr	125500N	Radial static load rating
Cor	113800N	Radial dynamic load rating
≈m	6.9Kg	weight

联系方式: 邮箱: mr.suo@zrbearing.net

电话: 0319-8509111

地址: 河北省临西县城北环路北侧-中达轴承