



NA306-19/V3/ER--RB3

Insert spherical bearings, eccentric sleeve locked outer spherical bearings, three-layer sealed outer spherical bearings

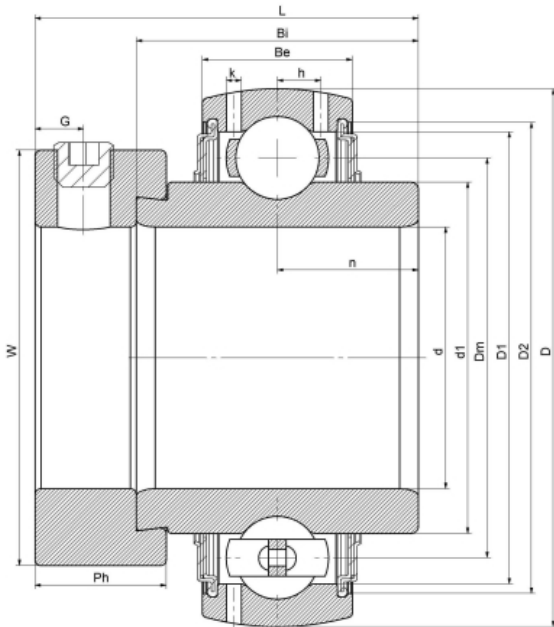
UEL306-19 L3

HC306-19 L3

G306-19 R3

EX306-19 L3

技术信息



主要尺寸和性能参数

d	30.16mm	Inside diameter
D	72mm	Outside diameter
d1	登录可见尺寸, 去登录	Outer diameter innering
d1	52mm	Center diameter
D1	登录可见尺寸, 去登录	Outer ring inner diameter
D2	登录可见尺寸, 去登录	Seal groove diameter
W	50mm	Eccentric sleeve outer diameter
Be	24mm	Outer ring height
h	6.2mm	Oil hole distance
n	17.5mm	channel distance
Bi	36.5mm	Inner ring height
L	49.8mm	total height
G	6.5mm	Set screw hole distance
Ph	17.5mm	Eccentric sleeve height
(UNF)	5/16-24	Set screw specifications
Cr	22400N	Radial static load rating
Cor	17400N	Radial dynamic load rating
≈m	0.45Kg	weight

联系方式: 邮箱: mr.suo@zrbearing.net

电话: 0319-8509111

地址: 河北省临西县城北环路北侧-中达轴承