



NA307/V3/ER--RB3

Insert spherical bearings, eccentric sleeve locked outer spherical bearings, three-layer sealed outer spherical bearings

GNE35KRRB3

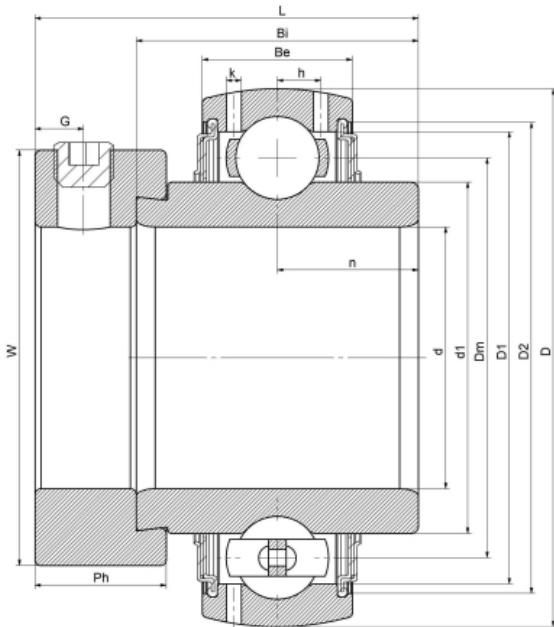
UEL307 L3

HC307 L3

G307 R3

EX307 L3

技术信息



主要尺寸和性能参数

d	35mm	Inside diameter
D	80mm	Outside diameter
d1	登录可见尺寸, 去登录	Outer diameter innering
d1	58.5mm	Center diameter
D1	登录可见尺寸, 去登录	Outer ring inner diameter
D2	登录可见尺寸, 去登录	Seal groove diameter
W	55mm	Eccentric sleeve outer diameter
Be	25mm	Outer ring height
h	7.2mm	Oil hole distance
n	18.3mm	channel distance
Bi	38.1mm	Inner ring height
L	51.4mm	total height
G	6.5mm	Set screw hole distance
Ph	17.5mm	Eccentric sleeve height
(UNF)	M8*1	Set screw specifications
Cr	27100N	Radial static load rating
Cor	15200N	Radial dynamic load rating
≈m	0.65Kg	weight

联系方式: 邮箱: mr.suo@zrbearing.net

电话: 0319-8509111

地址: 河北省临西县城北环路北侧-中达轴承