



NA309-26/V3/ER--RB3

Insert spherical bearings, eccentric sleeve locked outer spherical bearings, three-layer sealed outer spherical bearings

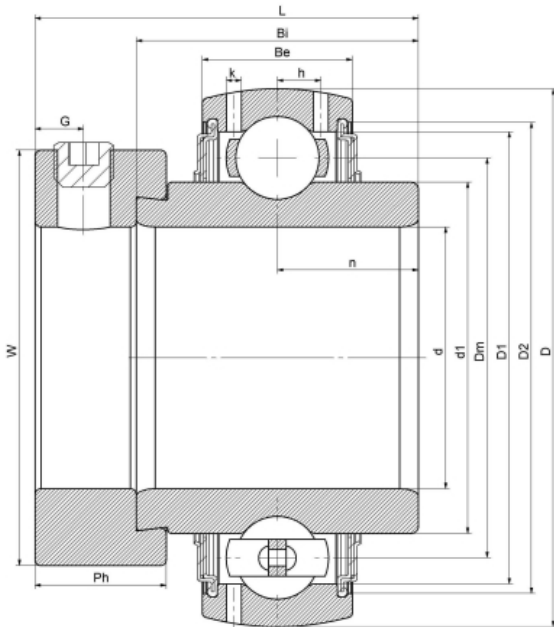
UEL309-26 L3

HC309-26 L3

G309-26 R3

EX309-26 L3

技术信息



主要尺寸和性能参数

d	40.28mm	Inside diameter
D	100mm	Outside diameter
d1	登录可见尺寸, 去登录	Outer diameter innering
d1	73.5mm	Center diameter
D1	登录可见尺寸, 去登录	Outer ring inner diameter
D2	登录可见尺寸, 去登录	Seal groove diameter
W	70mm	Eccentric sleeve outer diameter
Be	30mm	Outer ring height
h	8.7mm	Oil hole distance
n	19.8mm	channel distance
Bi	42.9mm	Inner ring height
L	58.5mm	total height
G	8mm	Set screw hole distance
Ph	20.6mm	Eccentric sleeve height
(UNF)	3/8-24	Set screw specifications
Cr	40600N	Radial static load rating
Cor	24000N	Radial dynamic load rating
≈m	1.1Kg	weight

联系方式: 邮箱: mr.suo@zrbearing.net

电话: 0319-5628888

地址: 河北省临西县城北环路北侧-中达轴承