



### NA311/V3/ER--RB3

Insert spherical bearings, eccentric sleeve locked outer spherical bearings, three-layer sealed outer spherical bearings

GNE55KRRB3

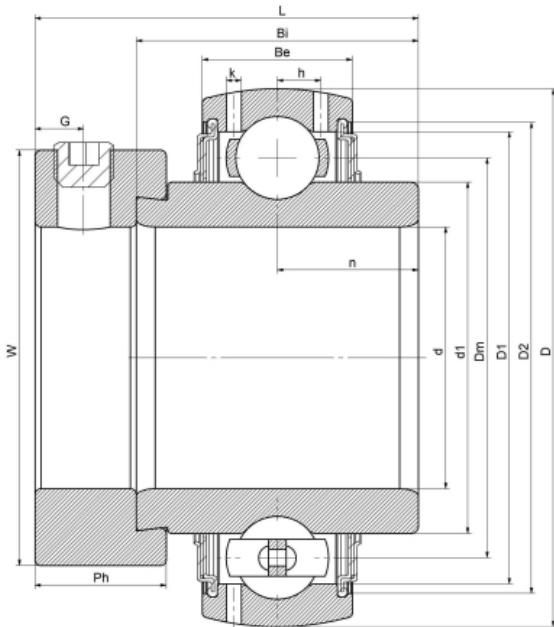
UEL311 L3

HC311 L3

G311 R3

EX311 L3

### 技术信息



#### 主要尺寸和性能参数

d	55mm	Inside diameter
D	120mm	Outside diameter
d1	登录可见尺寸, 去登录	Outer diameter innering
d1	88.5mm	Center diameter
D1	登录可见尺寸, 去登录	Outer ring inner diameter
D2	登录可见尺寸, 去登录	Seal groove diameter
W	83mm	Eccentric sleeve outer diameter
Be	34mm	Outer ring height
h	10.6mm	Oil hole distance
n	27.8mm	channel distance
Bi	55.6mm	Inner ring height
L	73mm	total height
G	8.5mm	Set screw hole distance
Ph	22.2mm	Eccentric sleeve height
(UNF)	M10*1.25	Set screw specifications
Cr	61800N	Radial static load rating
Cor	37800N	Radial dynamic load rating
≈m	1.85Kg	weight

联系方式: 邮箱: [mr.suo@zrbearing.net](mailto:mr.suo@zrbearing.net)

电话: 0319-8509111

地址: 河北省临西县城北环路北侧-中达轴承