



NA318-56/V3/ER--RB3

Insert spherical bearings, eccentric sleeve locked outer spherical bearings, three-layer sealed outer spherical bearings

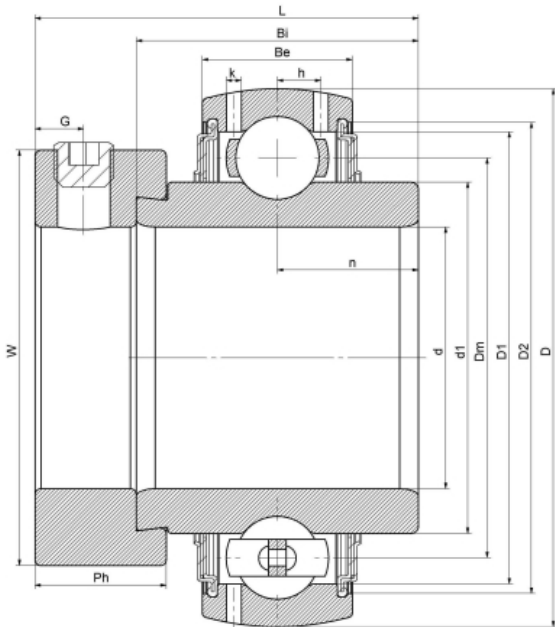
UEL318-56 L3

HC318-56 L3

G318-56 R3

EX318-56 L3

技术信息



主要尺寸和性能参数

d	88.9mm	Inside diameter
D	190mm	Outside diameter
d1	登录可见尺寸, 去登录	Outer diameter innering
d1	140mm	Center diameter
D1	登录可见尺寸, 去登录	Outer ring inner diameter
D2	登录可见尺寸, 去登录	Seal groove diameter
W	133mm	Eccentric sleeve outer diameter
Be	48mm	Outer ring height
h	16.5mm	Oil hole distance
n	43.6mm	channel distance
Bi	87.3mm	Inner ring height
L	115.7mm	total height
G	14mm	Set screw hole distance
Ph	36.5mm	Eccentric sleeve height
(UNF)	3/4-16	Set screw specifications
Cr	171710N	Radial static load rating
Cor	140130N	Radial dynamic load rating
≈m	8.1Kg	weight

联系方式: 邮箱: mr.suo@zrbearing.net

电话: 0319-8509111

地址: 河北省临西县城北环路北侧-中达轴承