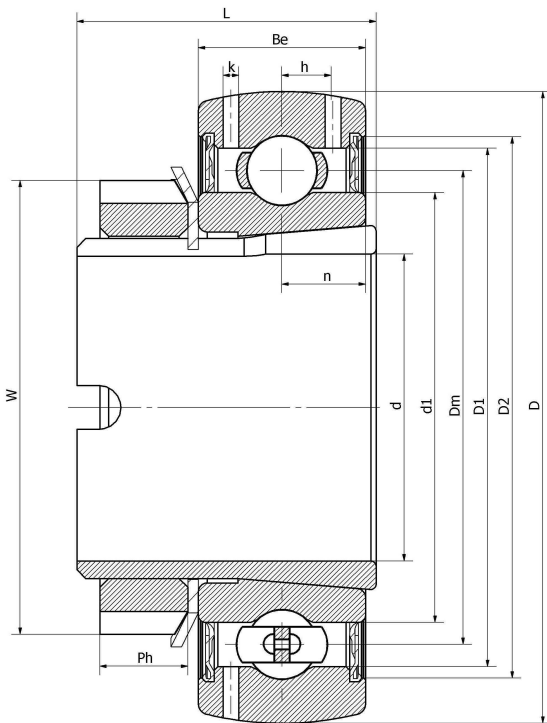


GSH 45/V2--SAF

Insert spherical bearings, eccentric sleeve locked outer spherical bearings, three-layer sealed outer spherical bearings

技术信息



主要尺寸和性能参数

| | | |
|-----|--------|---------------------------------|
| d | 45mm | Inside diameter |
| D | 85mm | Outside diameter |
| W | 62mm | Eccentric sleeve outer diameter |
| Be | 22mm | Outer ring height |
| h | 6.4mm | Oil hole distance |
| n | 18mm | channel distance |
| L | 46mm | total height |
| Ph | 10mm | Eccentric sleeve height |
| Cr | 31000N | Radial static load rating |
| Cor | 20100N | Radial dynamic load rating |
| Pu | 1050N | Fatigue load limit |
| ≈m | 0.69Kg | weight |

*数据表仅为所选产品的尺寸和基本额定载荷概览。请始终遵守本产品的所有更多信息和指南。您可通过我们网站上的联系表了解更多信息。