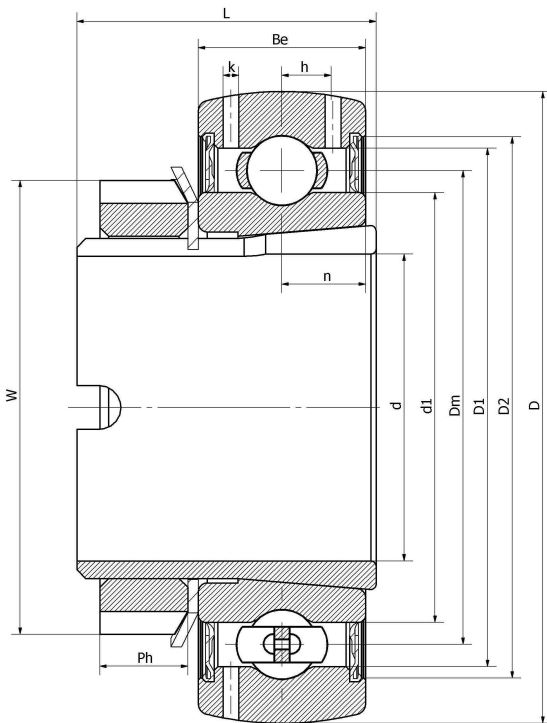


### GSH35-2RSR-B-L406/50

Insert spherical bearings, eccentric sleeve locked outer spherical bearings, three-layer sealed outer spherical bearings

## 技术信息



### 主要尺寸和性能参数

d	35mm	Inside diameter
D	72mm	Outside diameter
W	52mm	Eccentric sleeve outer diameter
Be	19mm	Outer ring height
h	5.8mm	Oil hole distance
n	9.5mm	channel distance
L	34.7mm	total height
Ph	15.7mm	Eccentric sleeve height
Cr	24900N	Radial static load rating
Cor	15300N	Radial dynamic load rating
≈m	0.4Kg	weight

\*数据表仅为所选产品的尺寸和基本额定载荷概览。请始终遵守本产品的所有更多信息和指南。您可通过我们网站上的联系表了解更多信息。

联系方式：邮箱：mr.suo@zrbearing.net

电话：0319-8509111

地址：河北省临西县城北环路北侧-中达轴承