



## RA 211/V2/ER--X-NPP

Insert bearings, eccentric sleeve locked outer spherical bearings, three-layer sealed outer spherical bearings

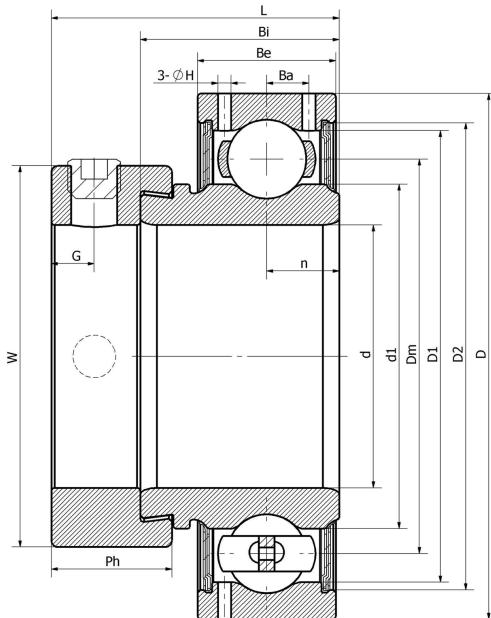
CSA211

UY211.SH

RAE211-XL-NPP

FHR211

## 技术信息



### 主要尺寸和性能参数

d	55mm	Inside diameter
D	100mm	Outside diameter
d1	登录可见尺寸, 去登录	Outer diameter innering
Dm	77.5mm	Center diameter
D1	登录可见尺寸, 去登录	Outer ring inner diameter
D2	登录可见尺寸, 去登录	Seal groove diameter
W	76.2mm	Eccentric sleeve outer diameter
Be	24mm	Outer ring height
n	12mm	channel distance
Bi	32.5mm	Inner ring height
L	48.7mm	total height
G	8mm	Set screw hole distance
Ph	20.7mm	Eccentric sleeve height
(UNF)	M10*1.25	Set screw specifications
Cr	43100N	Radial static load rating
Cor	29200N	Radial dynamic load rating
≈m	0.65Kg	weight

\*数据表仅为所选产品的尺寸和基本额定载荷概览。请始终遵守本产品的所有更多信息和指南。您可通过我们网站上的联系表了解更多信息。